



Palavras cruzadas

1º e 2º anos

A crossword puzzle grid with the following structure:

	C			
	H			
	U			
	V			
	A			

Illustrations and arrows:

- A coconut with a straw pointing to the first row, second column (C).
- A cloud with rain pointing to the first row, second column (C).
- A bunch of grapes pointing to the second row, second column (H).
- A sailboat pointing to the first row, first column.



A crossword puzzle grid with the following layout:

			E		
			S		
			T		
			R		
			E		
			L		
			A		

The word "ESTRELA" is formed by the letters in the grid. The grid has 6 rows and 6 columns. The letters are: Row 1: E; Row 2: S; Row 3: T; Row 4: R; Row 5: E; Row 6: L; Row 7: A.



Escola Portuguesa de São Tomé e Príncipe

Centro de Ensino de Língua Portuguesa - CELP

A crossword puzzle grid is displayed on a white background. The grid consists of empty squares for letters. Several illustrations are placed around the grid:

- A skeleton in the top left.
- A bunch of purple grapes in the top center.
- A zebra in the top right.
- A clown in the middle right.
- A ladder in the middle left.
- A red umbrella in the middle right.
- Four dice (two red, two blue) in the bottom left.
- A soldier in the bottom center.
- A heart containing a silhouette of a family in the bottom right.

A large, vertical watermark "www.sol.eti.k" is visible on the right side of the grid.



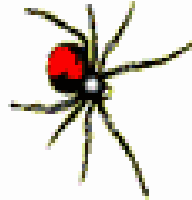


Escola Portuguesa de São Tomé e Príncipe

Centro de Ensino de Língua Portuguesa - CELP



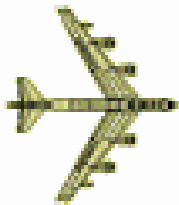
--	--	--	--	--	--



--	--	--	--	--	--



--	--	--	--



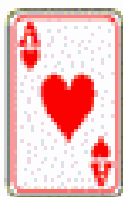
--	--	--	--	--



--	--	--	--	--	--



--	--	--	--



--	--	--	--	--



--	--	--	--	--	--



--	--	--	--